

MURALHA

Setúbal Residences

Comercialização

CENTURY 21.
Nações

Promoção

NEVOA



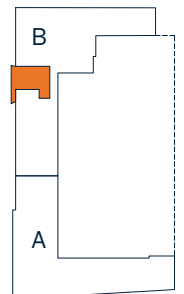
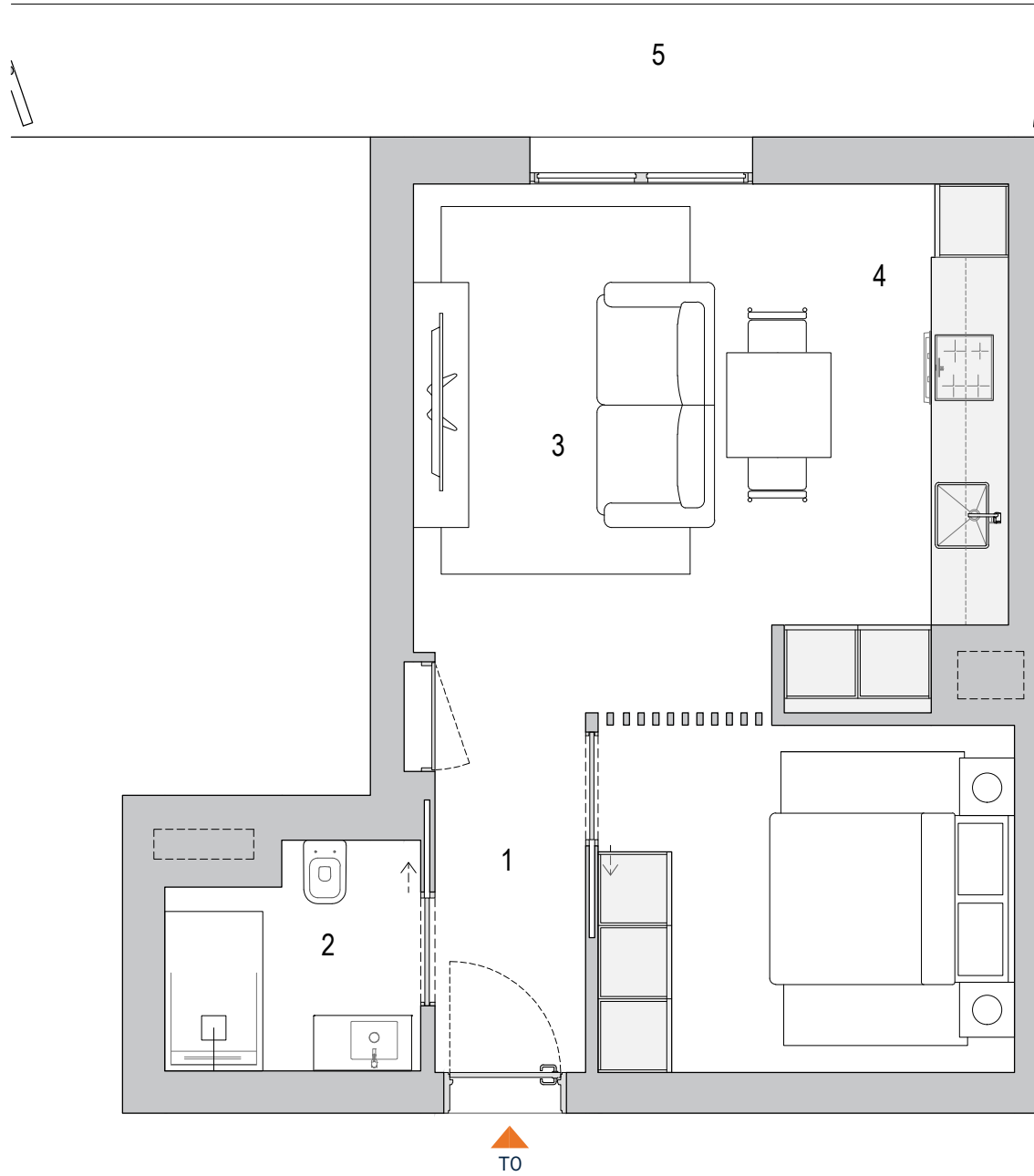
MAPA DE ÁREAS
E PLANTAS

The background features a grid of thin orange lines. A vertical line runs down the center, and two horizontal lines are positioned above and below the center. In each of the four quadrants created by these lines, there is a square outline. Additionally, large, faint orange arcs are visible, centered on the horizontal lines and extending across the width of the page.

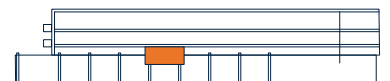
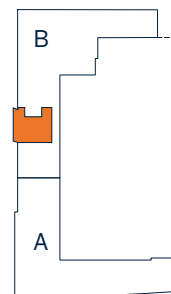
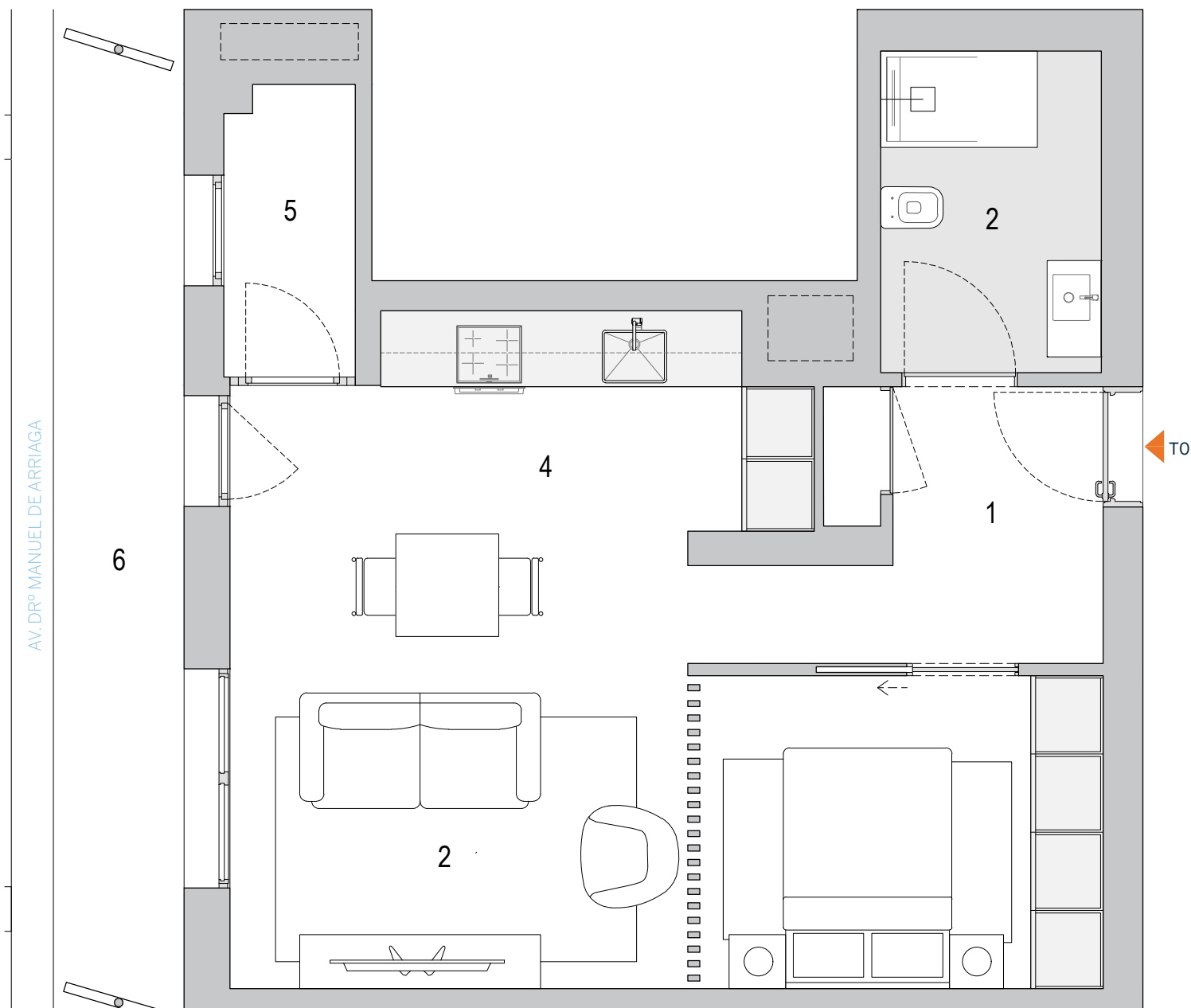
TO

01 Hall	2.22m ²	04 Cozinha	7.82m ²
02 I.S.	3.66m ²	05 Varanda	9.17m ²
03 Sala	23.83m ²		

AV. DRº MANUEL DE ARRIAGA

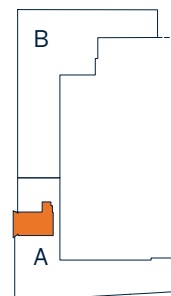
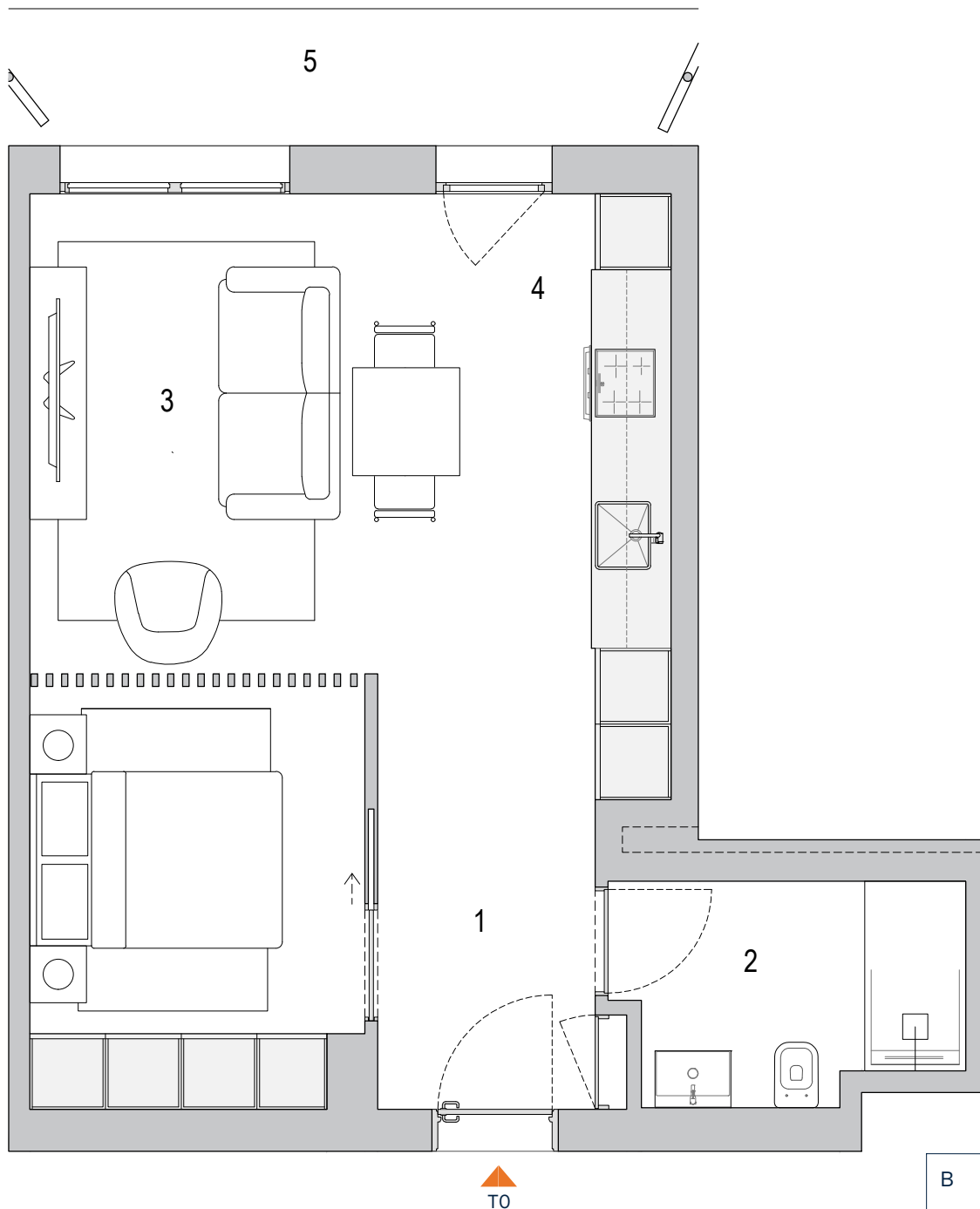


01 Hall	4.01m ²	04 Cozinha	8.94m ²
02 I.S.	4.92m ²	05 Estendal	2.59m ²
03 Sala	23.90m ²	06 Varanda	8.59m ²

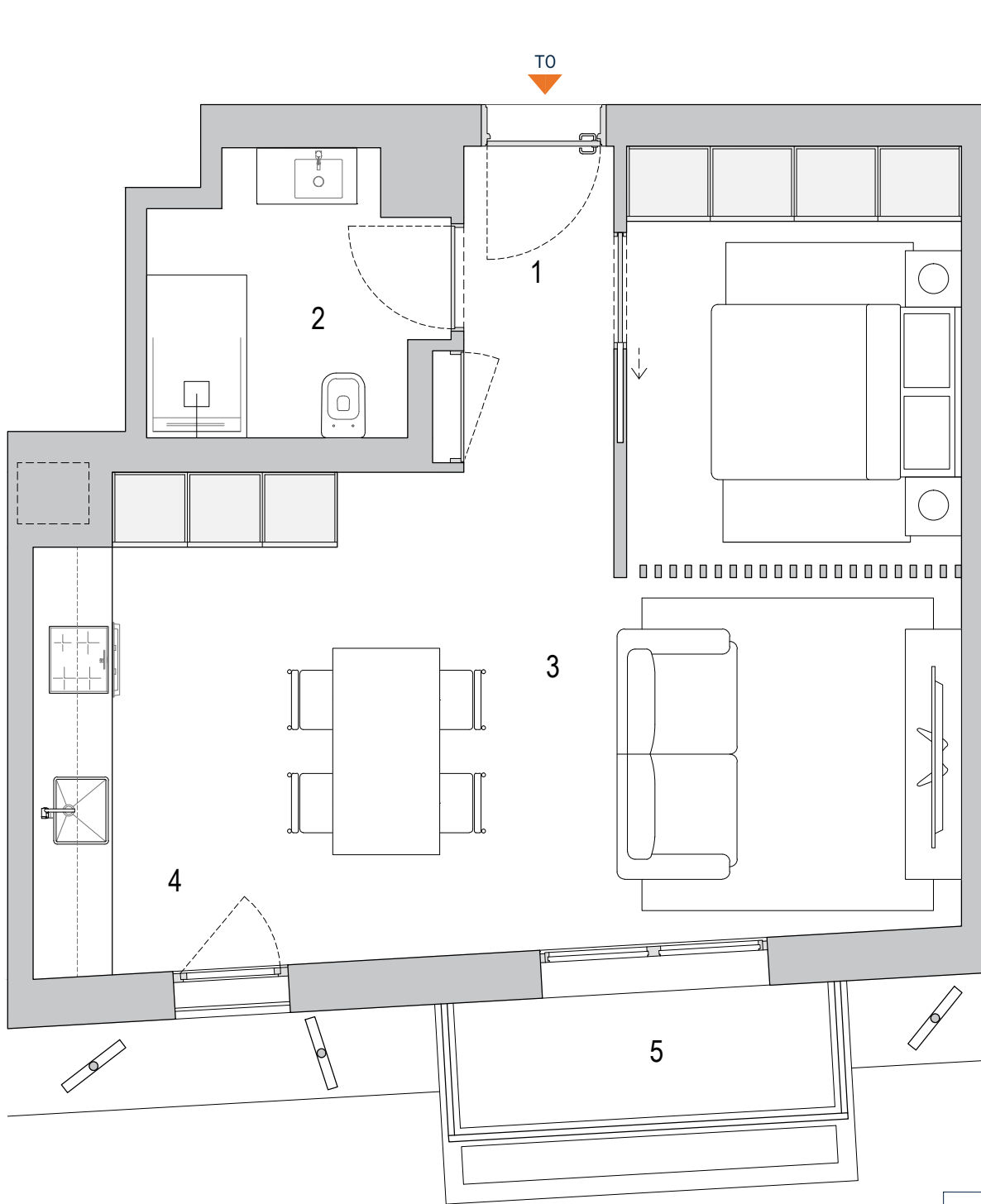


01 Hall	4.23m ²	04 Cozinha	7.64m ²
02 I.S.	4.68m ²	05 Varanda	5.83m ²
03 Sala	23.27m ²		

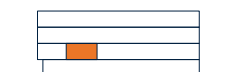
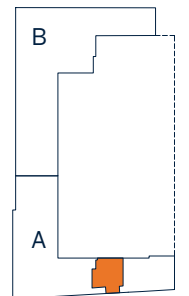
AV. DRº MANUEL DE ARRIAGA



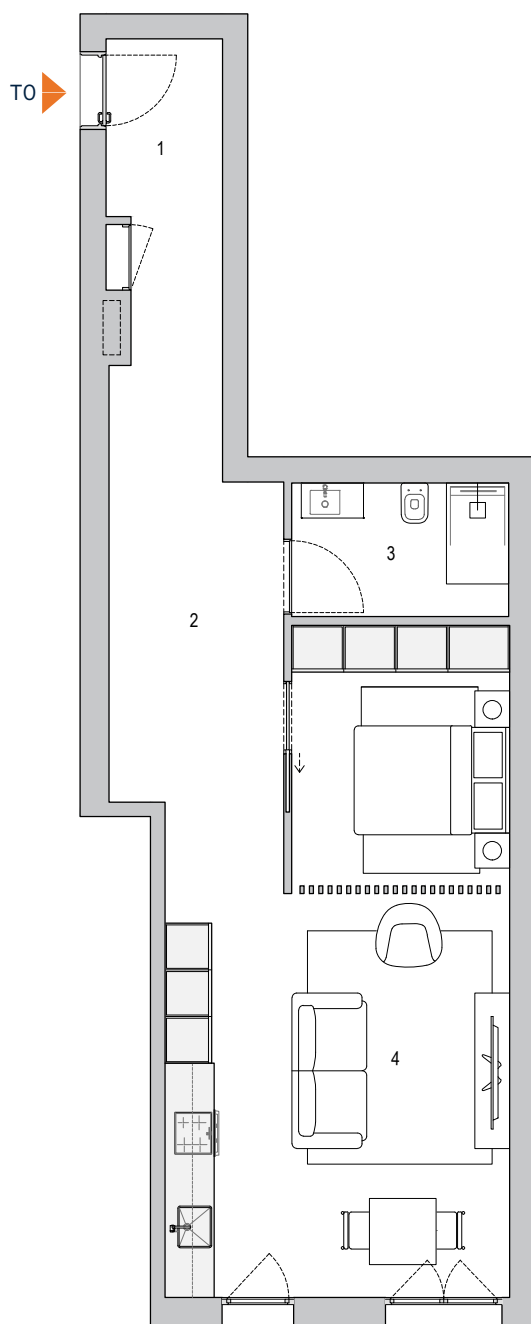
01 Hall	3.13m ²	05 Cozinha	7.01m ²
02 I.S.	4.87m ²	06 Varanda	3.80m ²
03 Sala	28.04m ²		



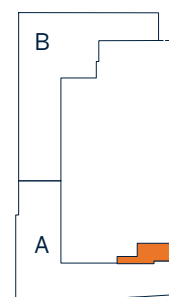
AVENIDA 5 DE OUTUBRO



01	Hall	7.87m ²
02	Circulação	9.25m ²
03	I.S.	4.87m ²
04	Sala e Cozinha	34.50m ²

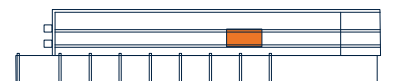
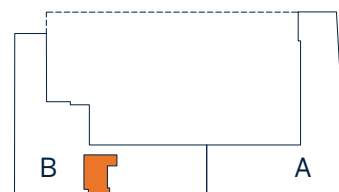
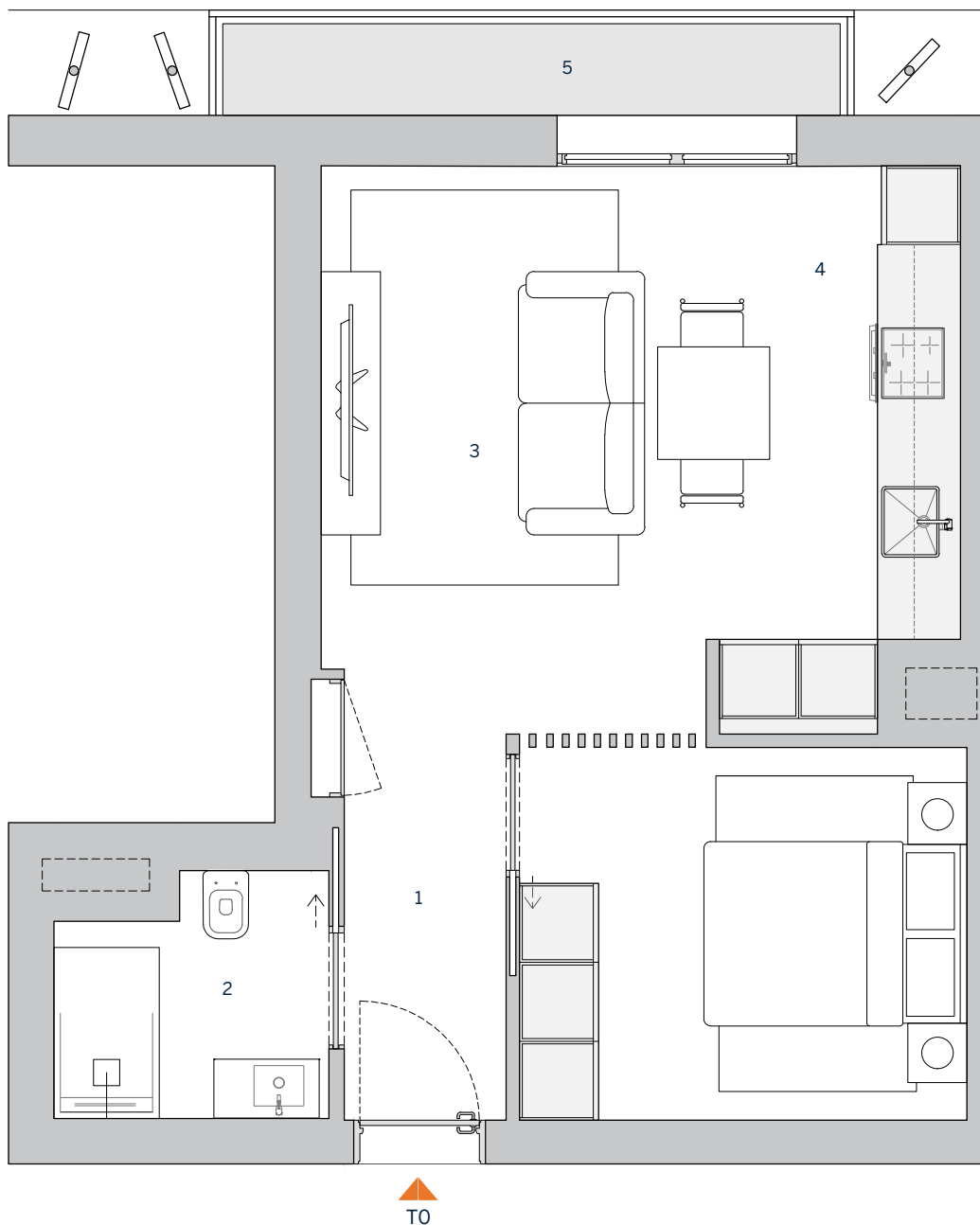


RUA CAPITÃO TENENTE CARVALHO ARAÚJO



01 Hall	2.22m ²	04 Cozinha	7.82m ²
02 I.S.	3.66m ²	05 Varanda	3.92m ²
03 Sala	23.83m ²		

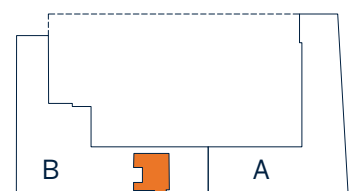
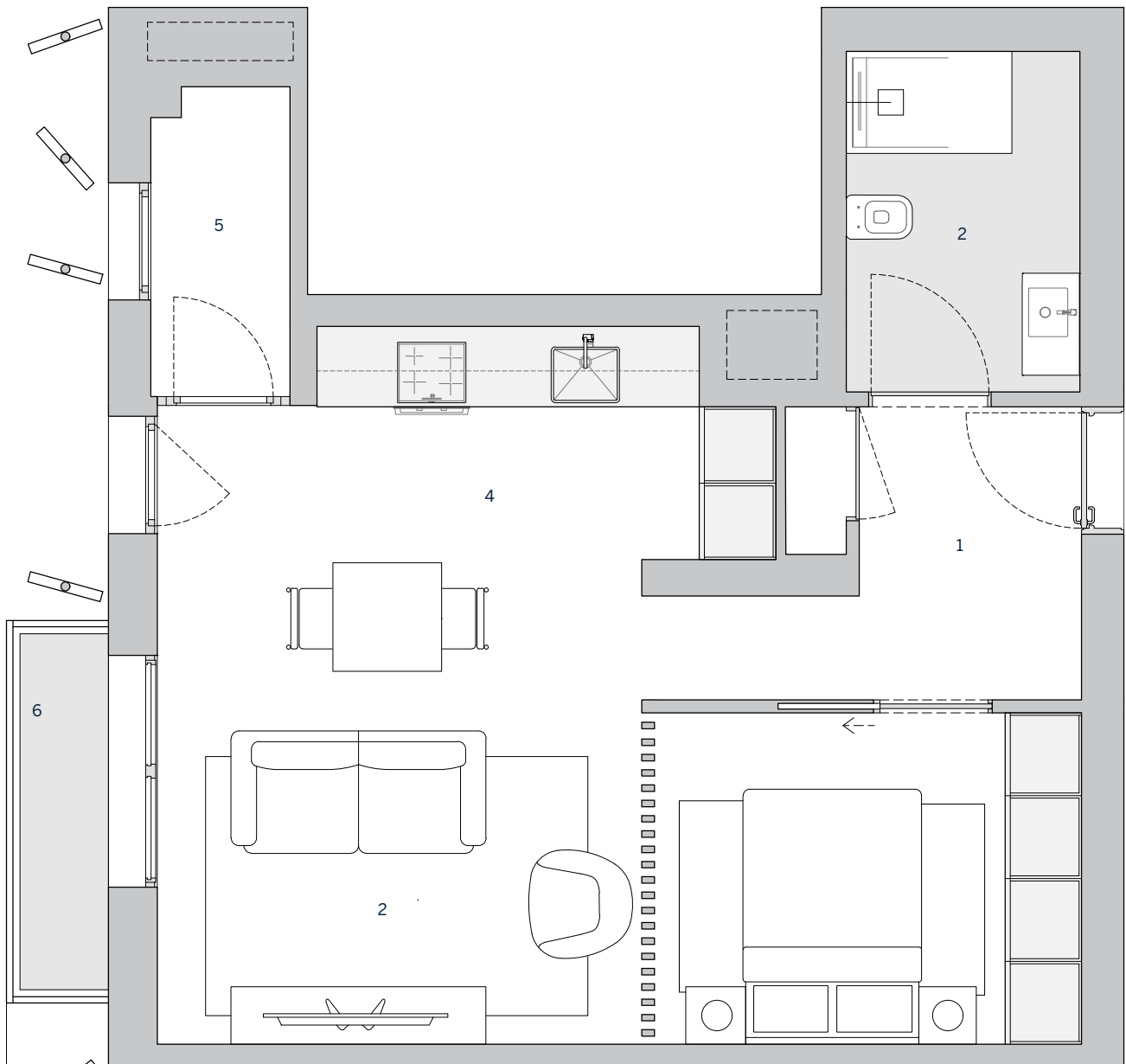
AV. DRº MANUEL DE ARRIAGA



01 Hall	4.01m ²	04 Cozinha	8.94m ²
02 I.S.	4.92m ²	05 Estendal	2.59m ²
03 Sala	23.90m ²	06 Varanda	2.40m ²



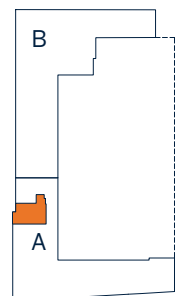
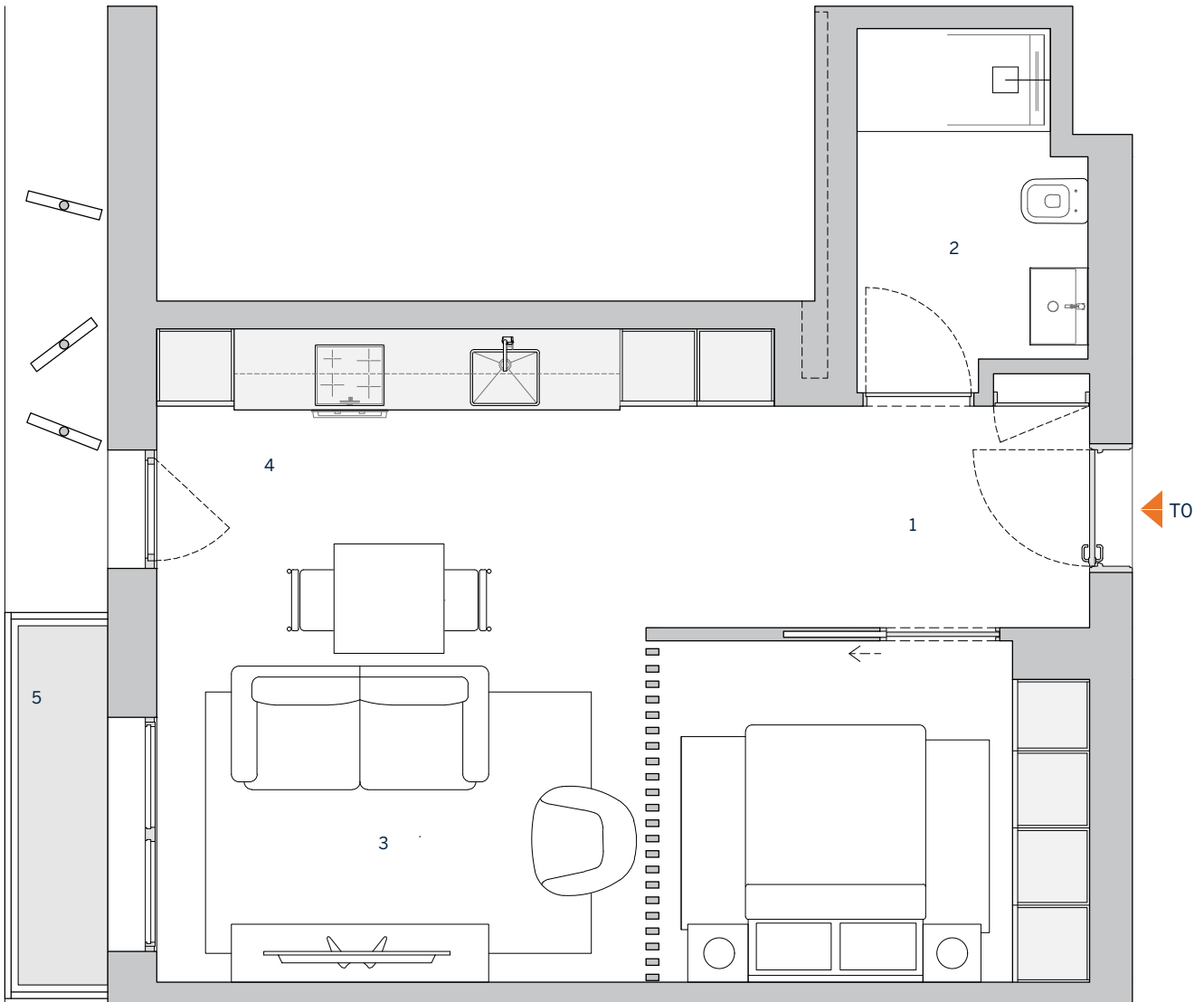
AV. DRº MANUEL DE ARRIAGA



01 Hall	4.23m ²	04 Cozinha	7.64m ²
02 I.S.	4.68m ²	05 Varanda	2.40m ²
03 Sala	23.27m ²		

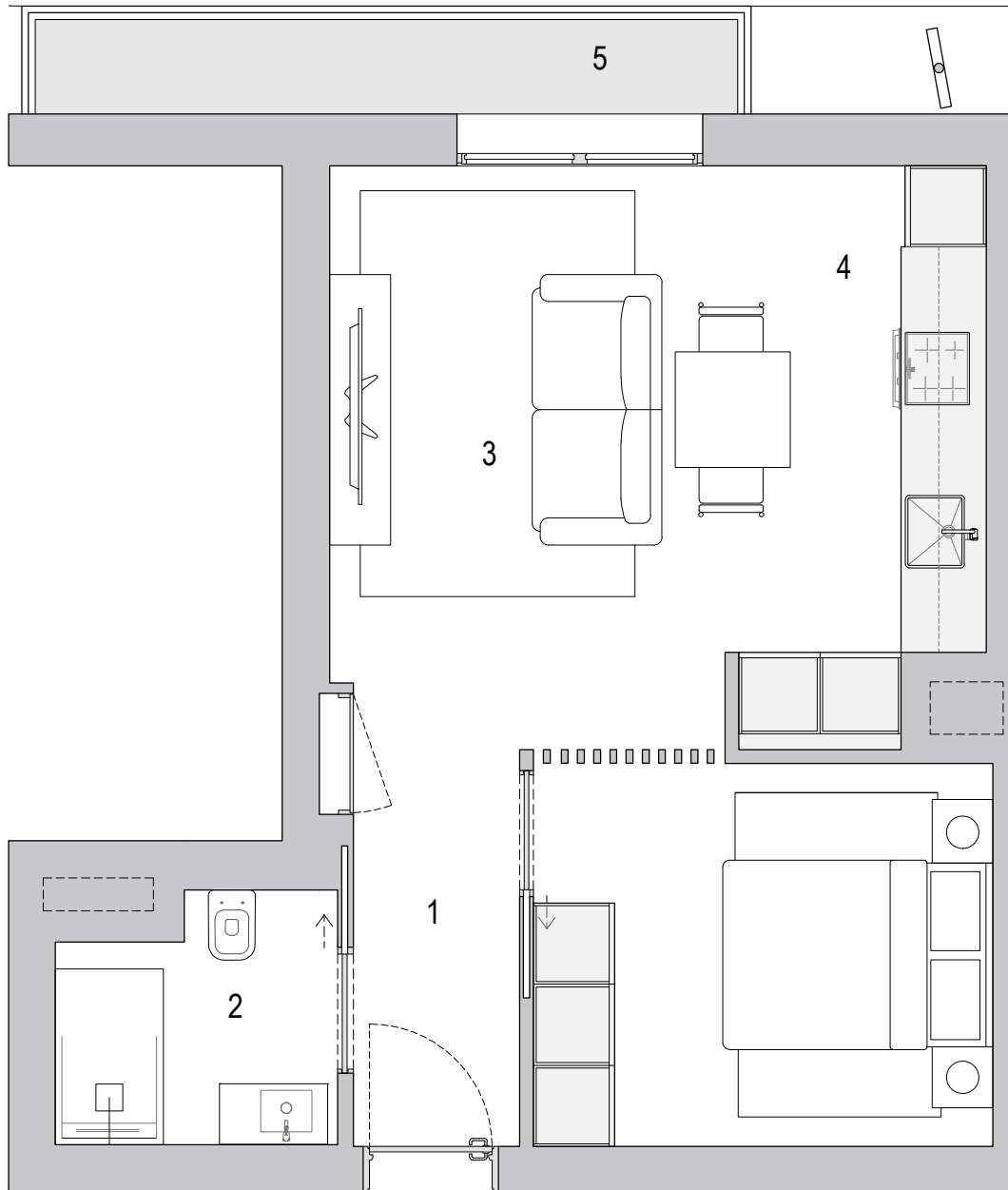


AV. DRº MANUEL DE ARRIAGA

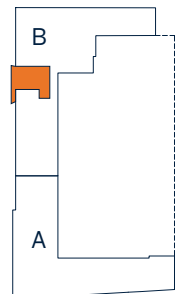


01 Hall	2.22m ²	04 Cozinha	7.82m ²
02 I.S.	3.66m ²	05 Varanda	4.32m ²
03 Sala	23.83m ²		

AV. DRº MANUEL DE ARRIAGA



TO



MURALHA

Setúbal Residences

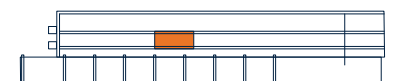
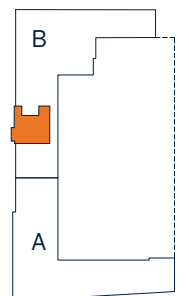
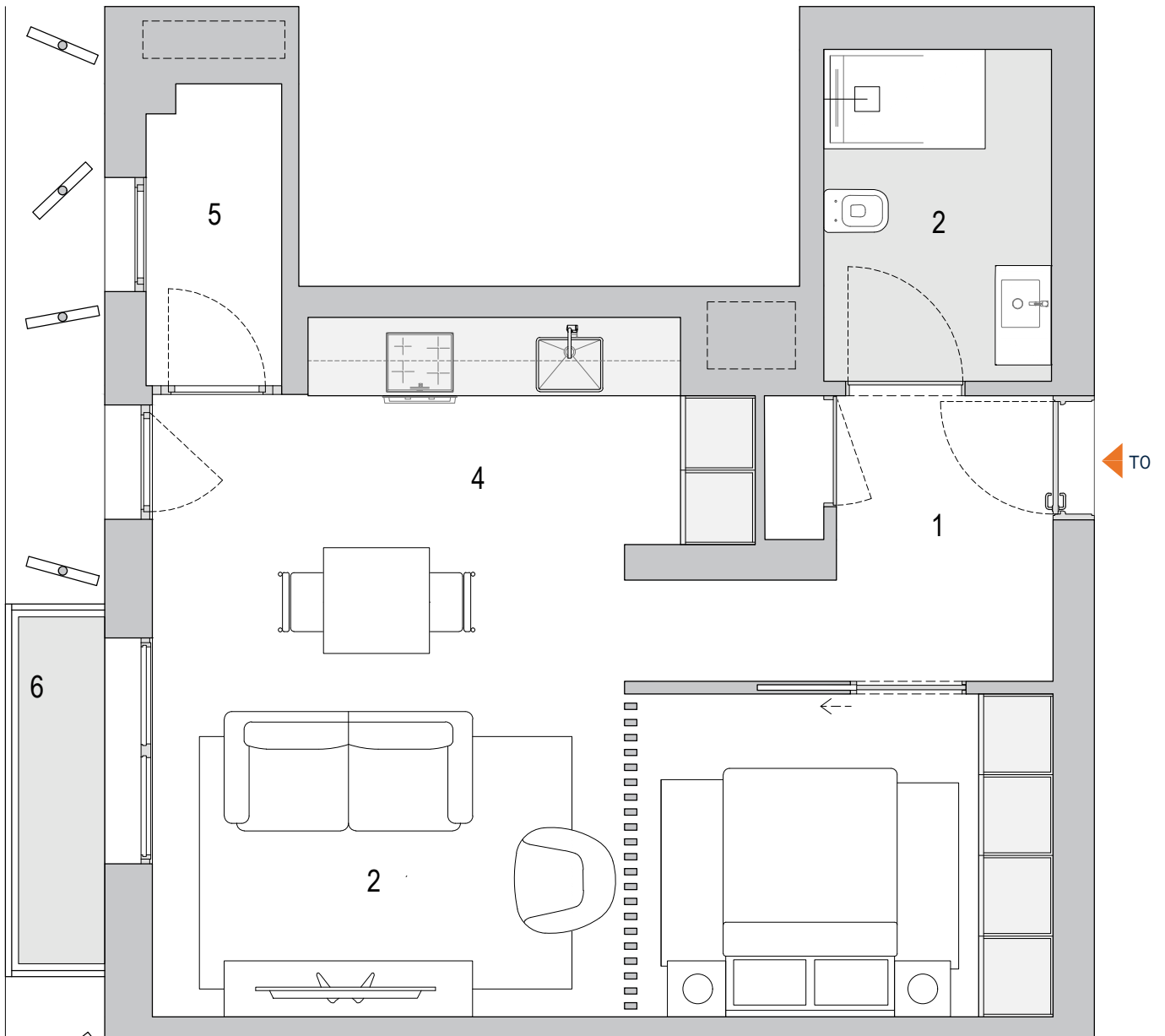
3º K^{TO}

Piso 3
57,39 m² área bruta privativa
59,79 m² a.b.p. c/ varanda

01 Hall	4.01m ²	04 Cozinha	8.94m ²
02 I.S.	4.92m ²	05 Estendal	2.59m ²
03 Sala	23.90m ²	06 Varanda	2.40m ²



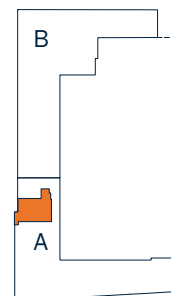
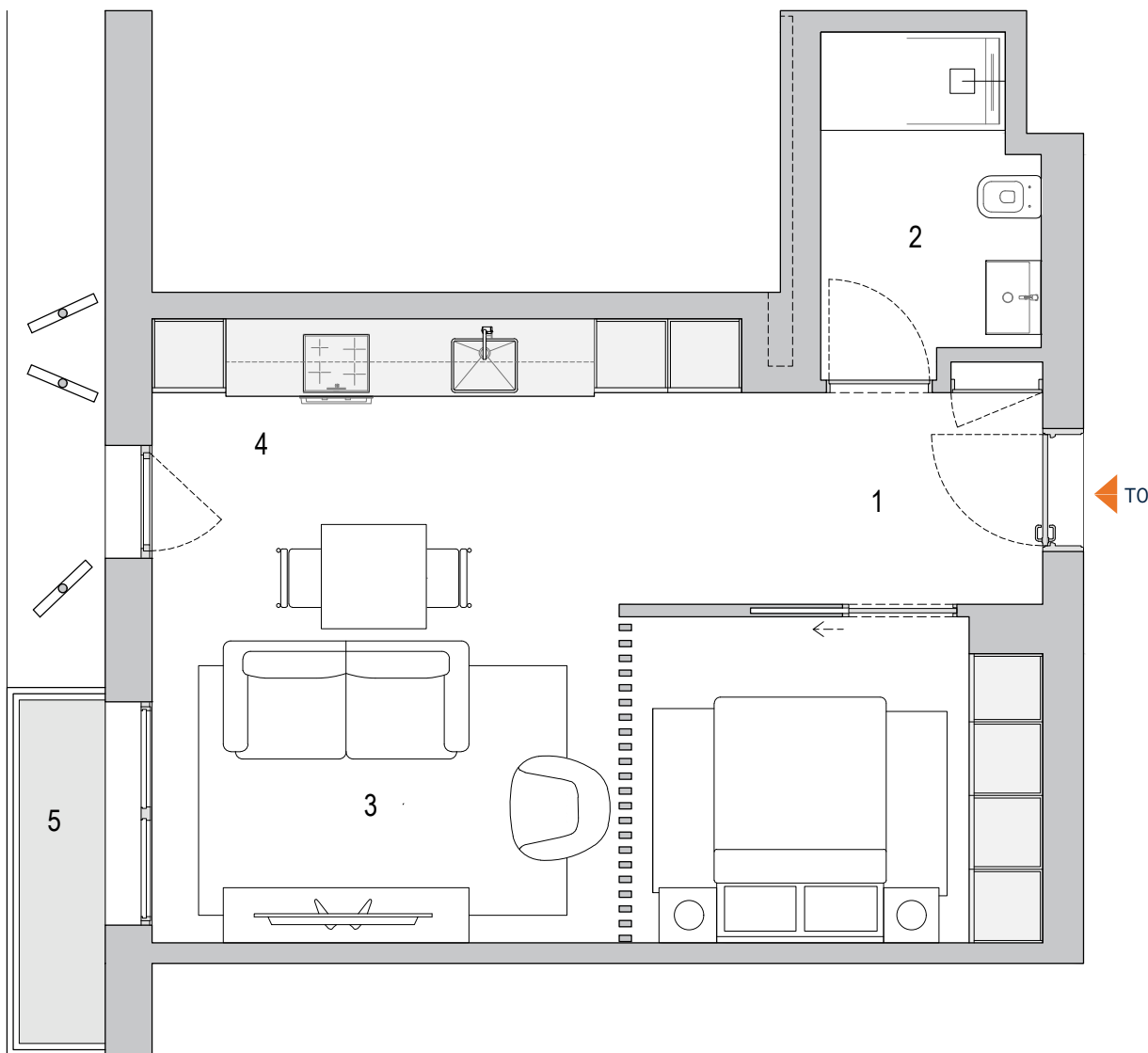
AV. DRº MANUEL DE ARRIAGA



01 Hall	4.23m ²	04 Cozinha	7.64m ²
02 I.S.	4.68m ²	05 Varanda	2.40m ²
03 Sala	23.27m ²		



AV. DRº MANUEL DE ARRIAGA



MURALHA

Setúbal Residences