

MURALHA

Setúbal Residences

Comercialização

CENTURY 21.
Nações

Promoção

NEVOA



MAPA DE ÁREAS
E PLANTAS

The background features a grid of thin orange lines. A vertical line runs down the center, and a horizontal line runs across the middle. In each of the four quadrants, there is a square outline. Additionally, large, faint orange arcs are visible, curving from the top-left and bottom-left corners towards the center, and from the top-right and bottom-right corners towards the center. The text 'T2' is centered in a dark blue, serif font.

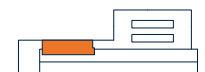
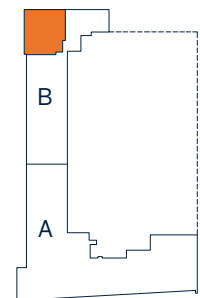
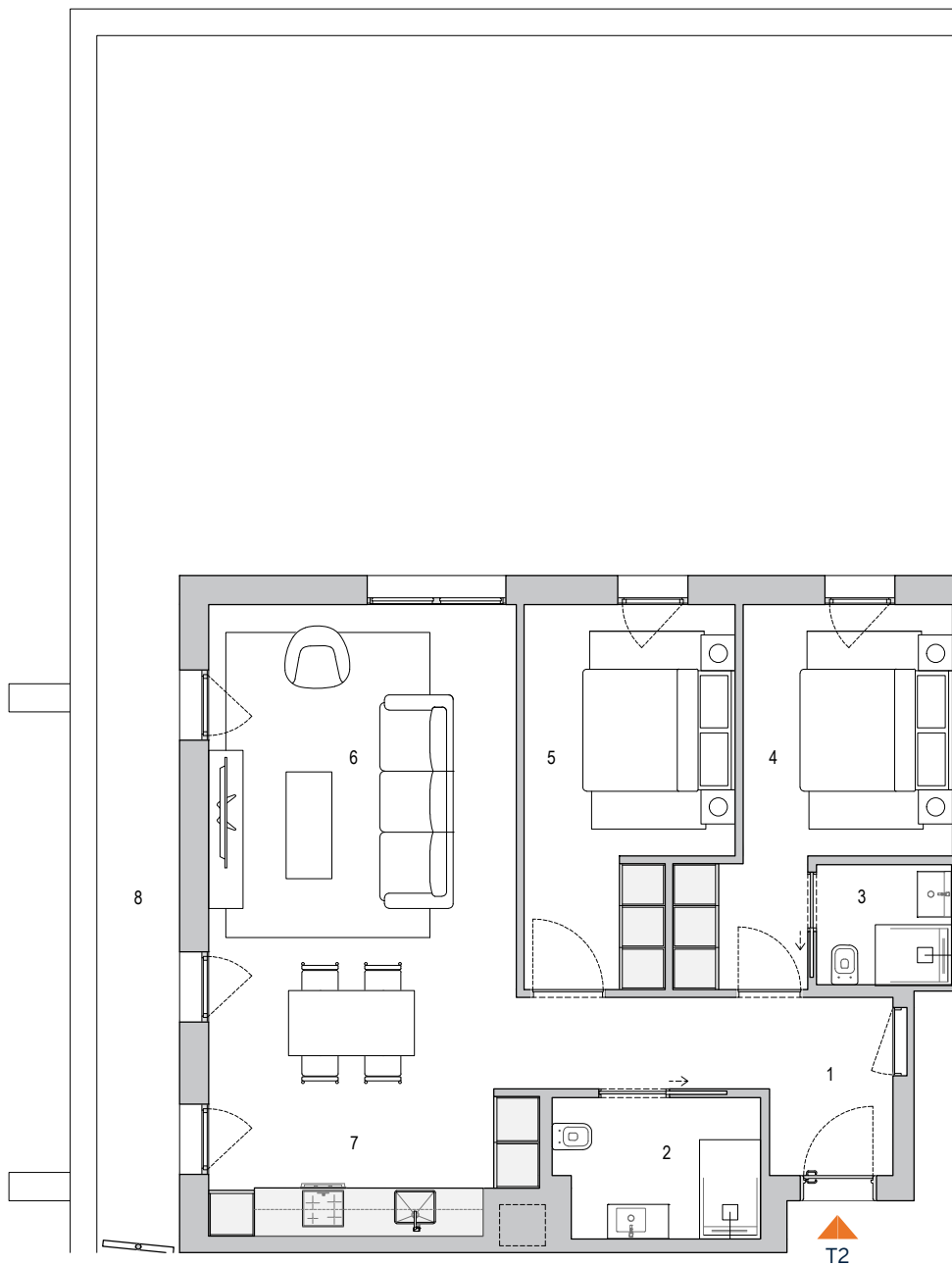
T2

01 Hall	7.77m ²	05 Quarto	12.31m ²
02 I.S.	4.98m ²	06 Sala	26.00m ²
03 I.S. Suite	2.88m ²	07 Cozinha	7.48m ²
04 Suite	12.07m ²	09 Terraço	99.86m ²

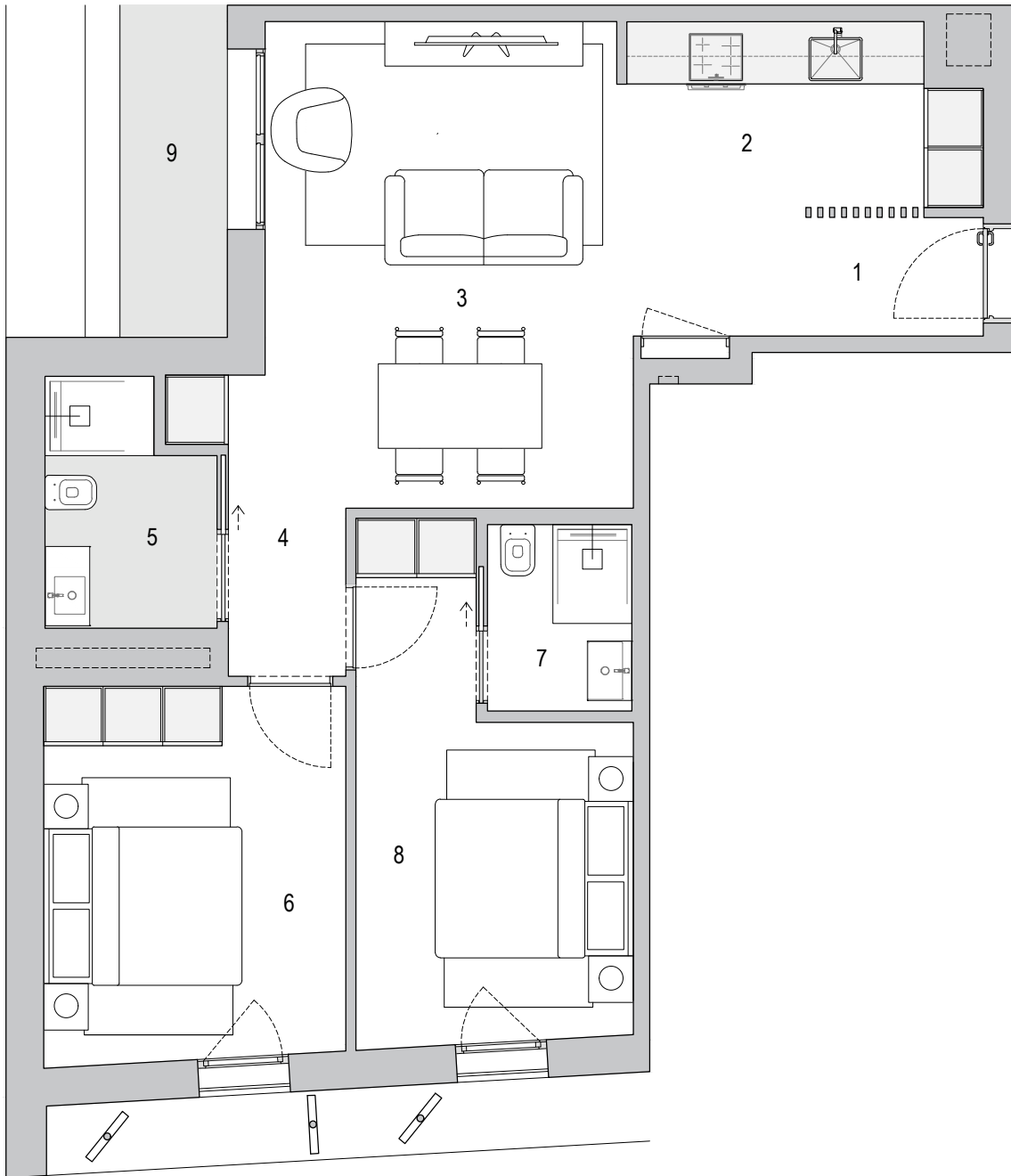
RUA DO ANTIGO MATADOURO



AV. DRº MANUEL DE ARRIAGA

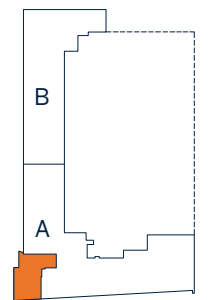


01 Hall	2.26m ²	06 Quarto	11.50m ²
02 Cozinha	6.49m ²	07 I.S. Suite	2.84m ²
03 Sala	21.15m ²	08 Suite	11.55m ²
04 Circulação	2.01m ²	09 Varanda	4.06m ²
05 I.S.	4.01m ²		

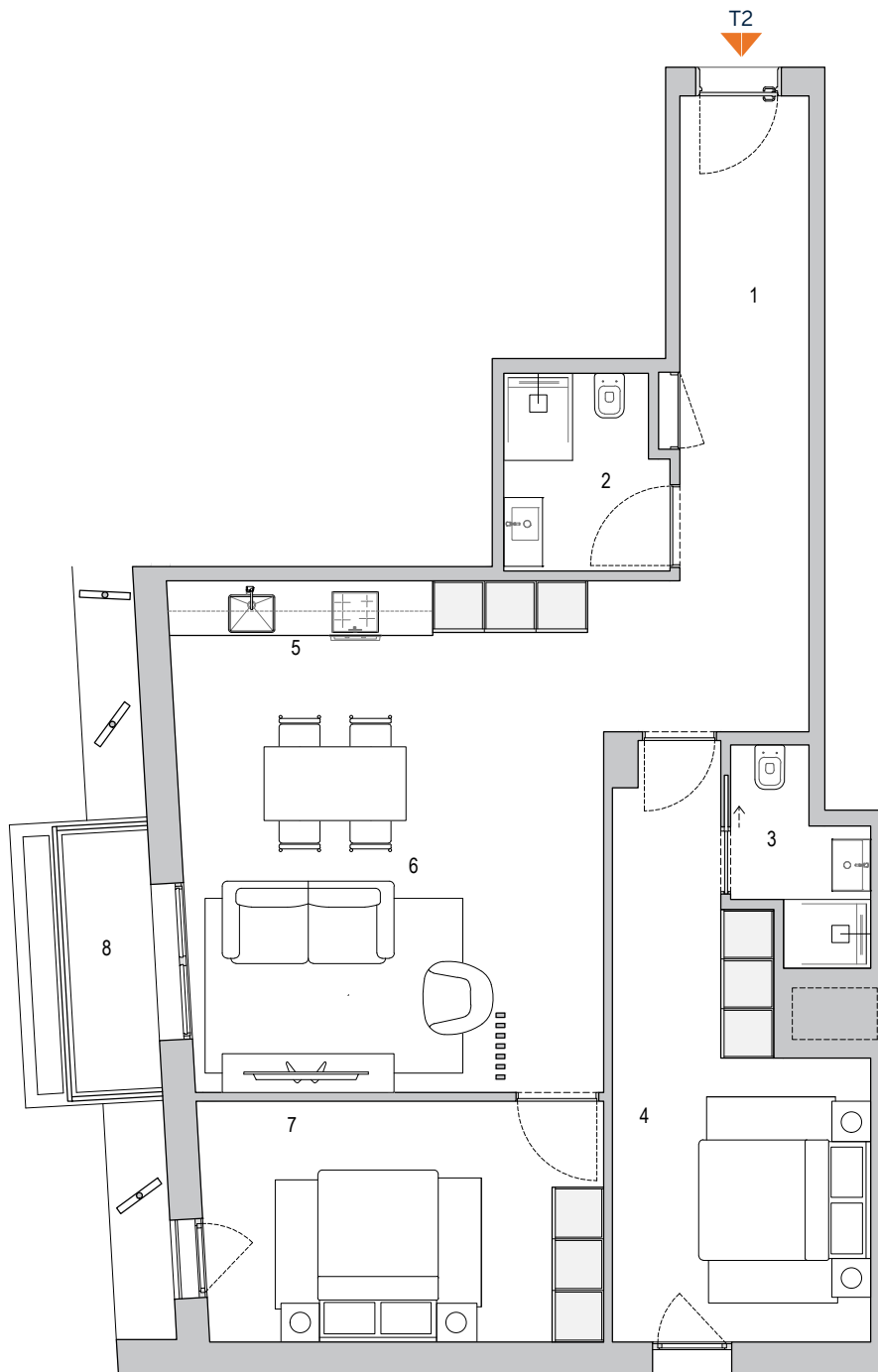


AV. DRº MANUEL DE ARRIAGA

AVENIDA 5 DE OUTUBRO

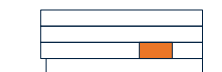
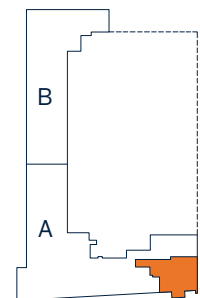


01 Hall	8,46m ²	05 Cozinha	8,75m ²
02 I.S.	4,30m ²	06 Sala	24,69m ²
03 I.S. Suite	3,11m ²	07 Quarto	13,05m ²
04 Suite	15,47m ²	08 Varanda	3,80m ²

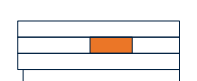
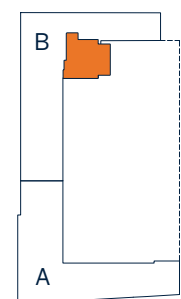
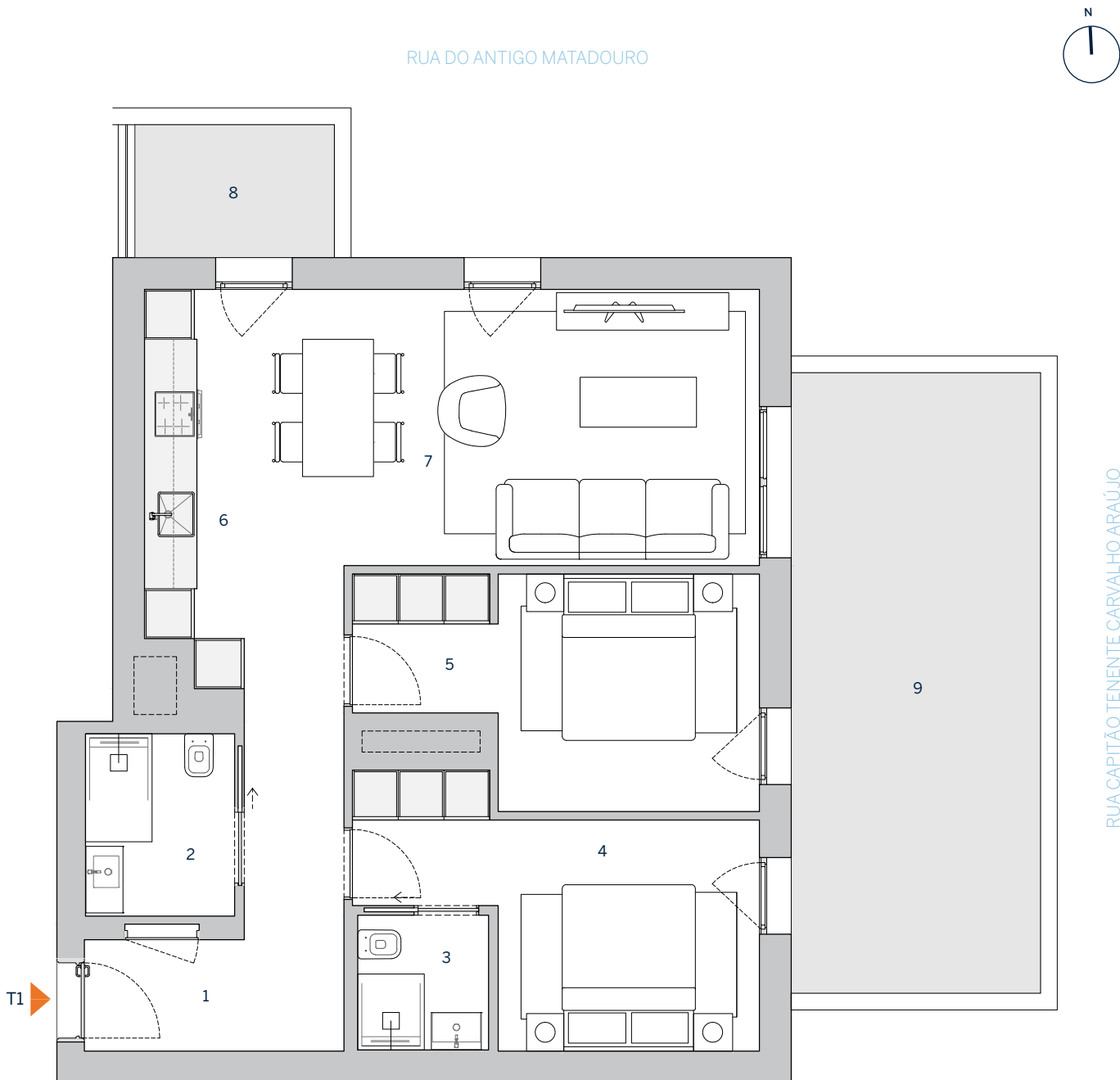


AVENIDA 5 DE OUTUBRO

RUA CAPITÃO TENENTE CARVALHO ARAÚJO



01 Hall	8,53m ²	06 Cozinha	8,00m ²
02 I.S.	4,04m ²	07 Sala	19,03m ²
03 I.S. Suite	2,64m ²	08 Terraço	4,80m ²
04 Suite	11,53m ²	09 Terraço	14,15m ²
05 Quarto	11,83m ²		

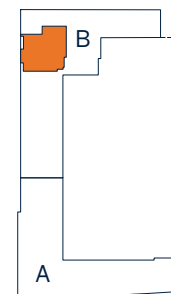
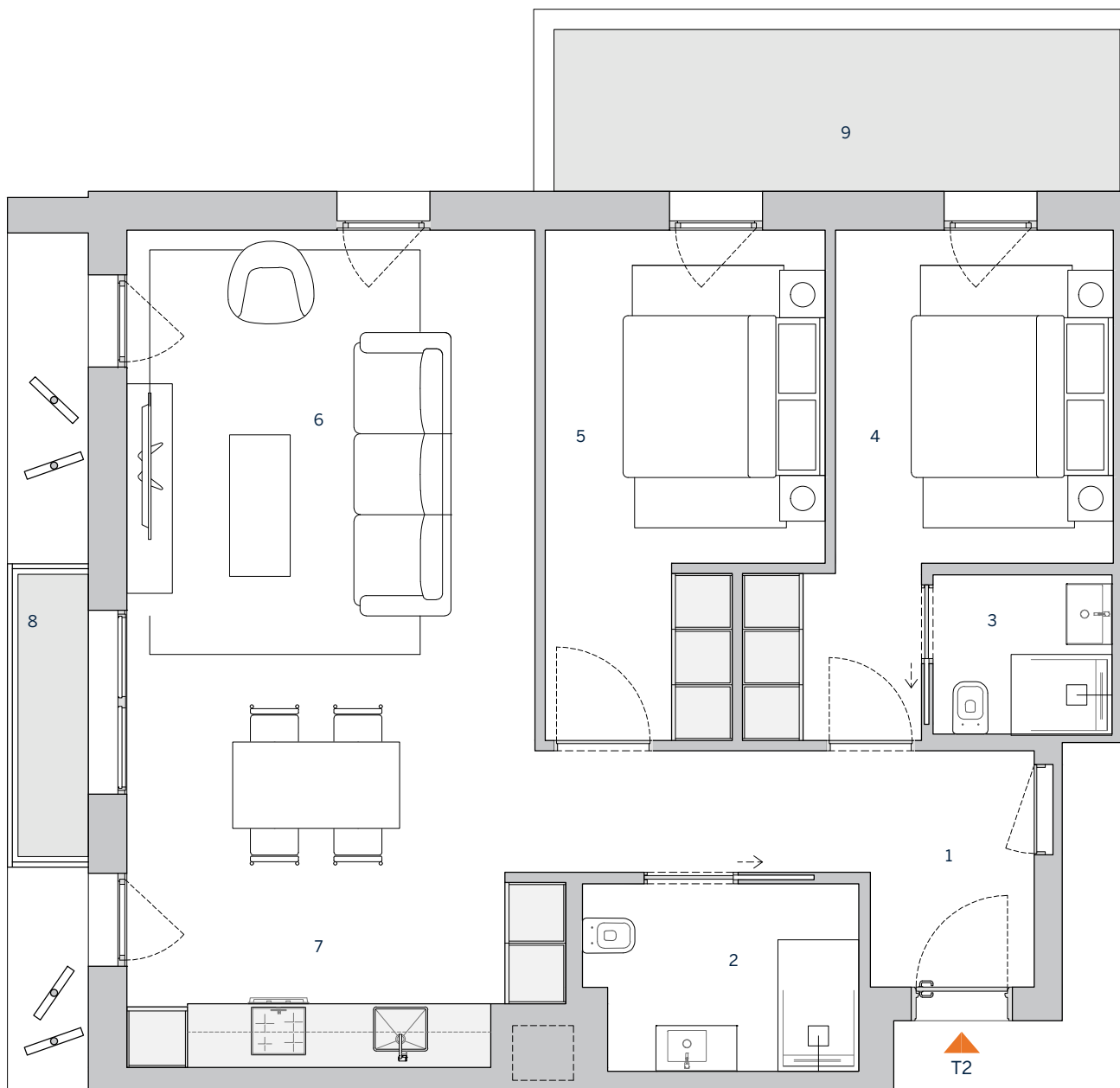


01 Hall	7.77m ²	06 Sala	26.00m ²
02 I.S.	4.98m ²	07 Cozinha	7.48m ²
03 I.S. Suite	2.88m ²	08 Varanda	2.40m ²
04 Suite	12.07m ²	09 Terraço	10.62m ²
05 Quarto	12.31m ²		

RUA DO ANTIGO MATADOURO

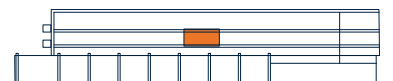
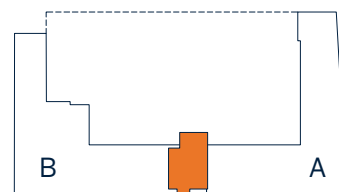
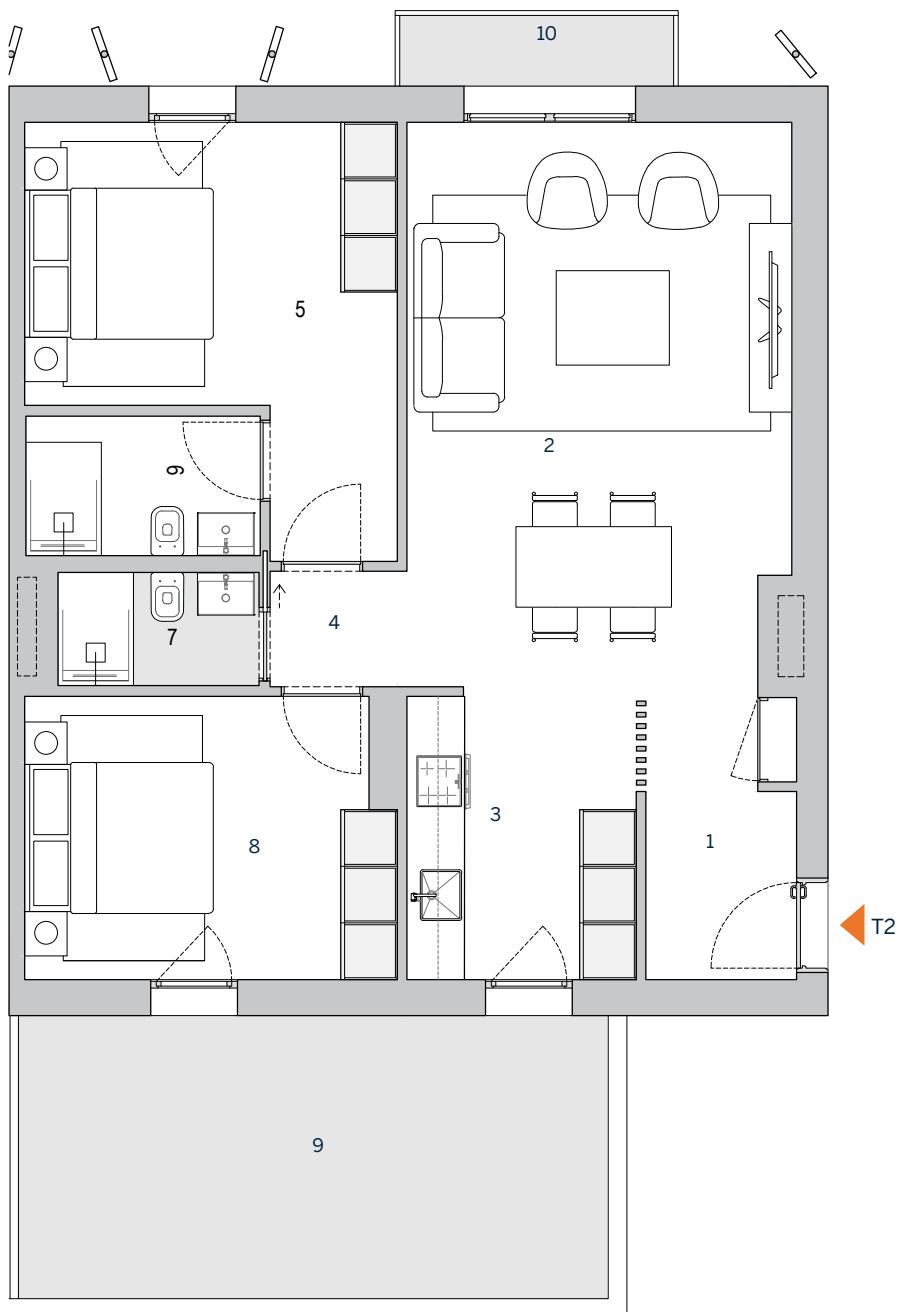


AV. DRº MANUEL DE ARRIAGA



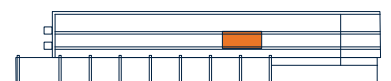
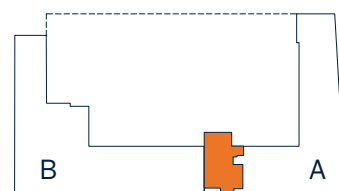
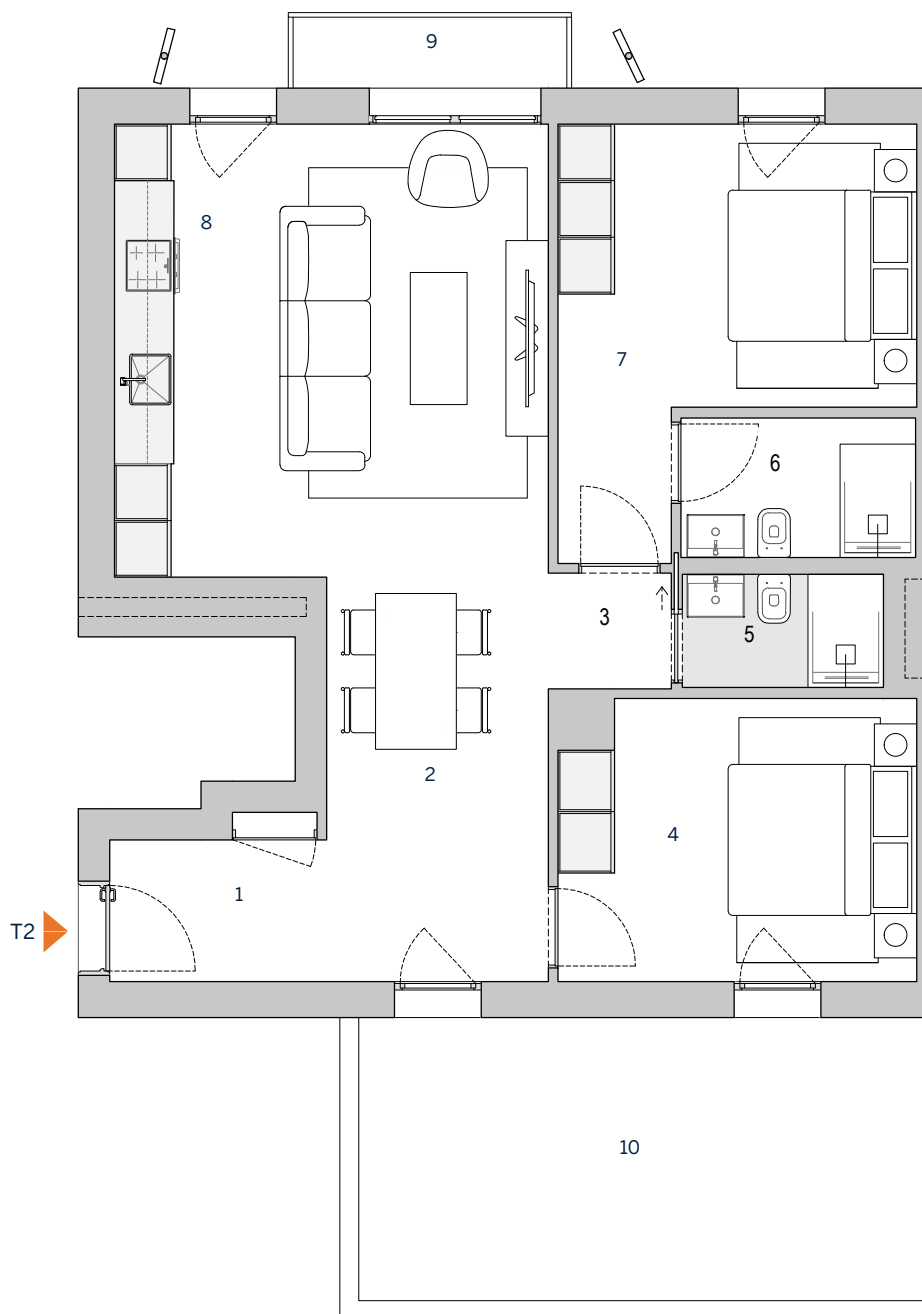
01 Hall	4.37m ²	06 I.S. Suite	3.75m ²
02 Sala	24.36m ²	07 I.S.	2.65m ²
03 Cozinha	7.29m ²	08 Quarto	11.49m ²
04 Circulação	1.78m ²	09 Terraço	20.96m ²
05 Suite	14.10m ²	10 Varanda	2.40m ²

AV. DRº MANUEL DE ARRIAGA

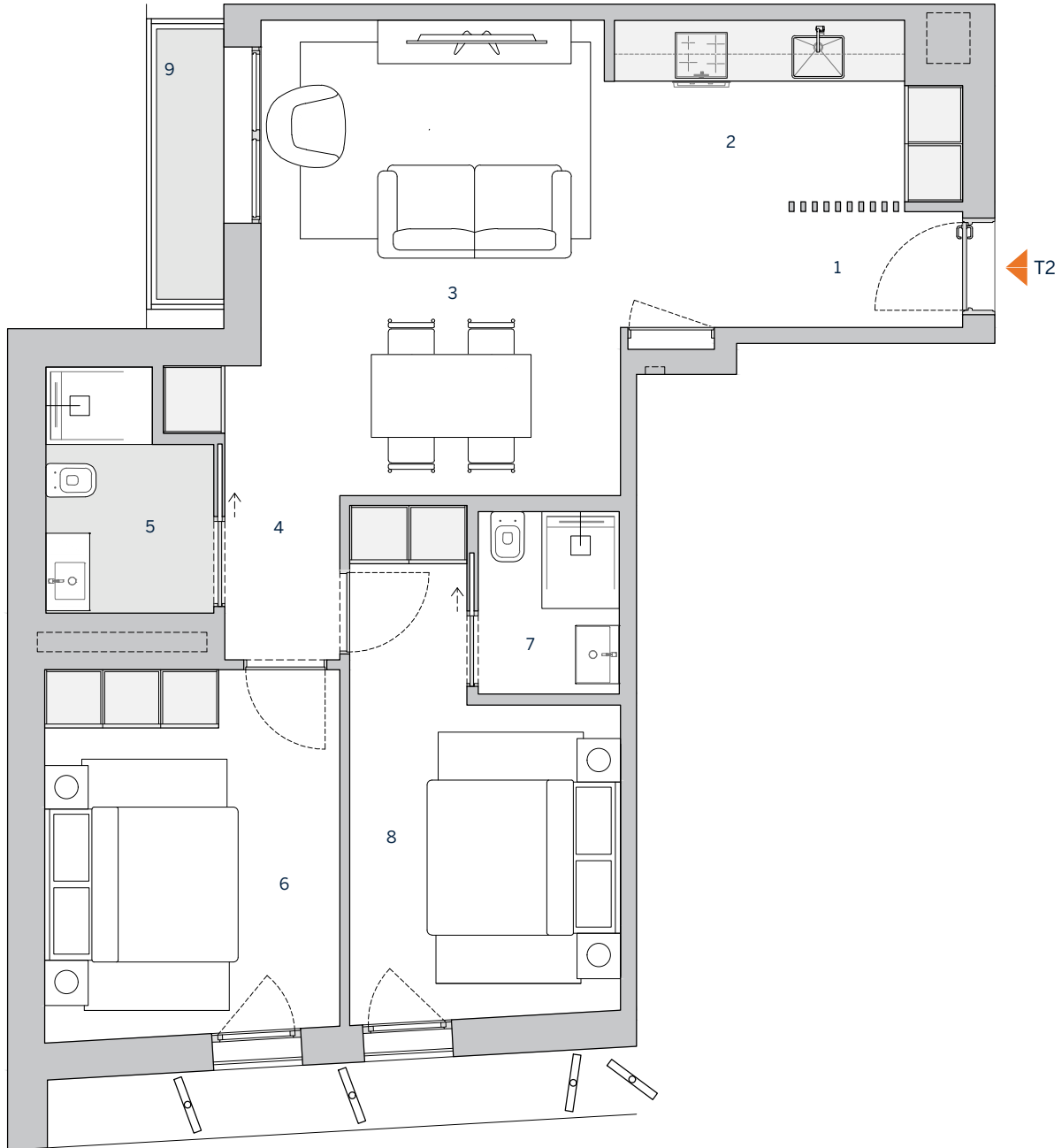


01 Hall	3.45m ²	06 I.S. Suite	3.75m ²
02 Sala	23.51m ²	07 Suite	13.40m ²
03 Circulação	1.60m ²	08 Cozinha	8.64m ²
04 Quarto	11.07m ²	09 Varanda	2.40m ²
05 I.S.	2.65m ²	10 Terraço	20.09m ²

AV. DRº MANUEL DE ARRIAGA

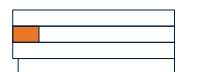
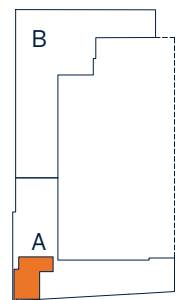


01 Hall	2.26m ²	06 Quarto	11.50m ²
02 Cozinha	6.49m ²	07 I.S. Suite	2.84m ²
03 Sala	21.15m ²	08 Suite	11.55m ²
04 Circulação	2.01m ²	09 Varanda	2.40m ²
05 I.S.	4.01m ²		



AV. DRº MANUEL DE ARRIAGA

AVENIDA 5 DE OUTUBRO



MURALHA

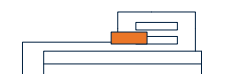
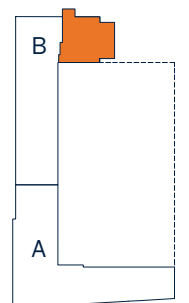
Setúbal Residences

3º M^{T2}

Piso 3
82,58 m² área bruta privativa
101,59 m² a.b.p. c/ varanda

01 Hall	8,53m ²	06 Cozinha	8,00m ²
02 I.S.	4,04m ²	07 Sala	19,03m ²
03 I.S. Suite	2,64m ²	08 Varanda	4,80m ²
04 Suite	11,53m ²	09 Varanda	14,21m ²
05 Quarto	11,83m ²		

RUA DO ANTIGO MATADOURO

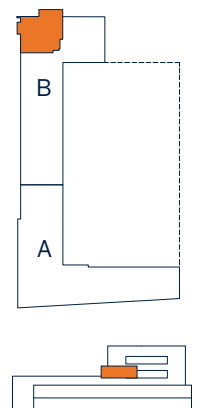
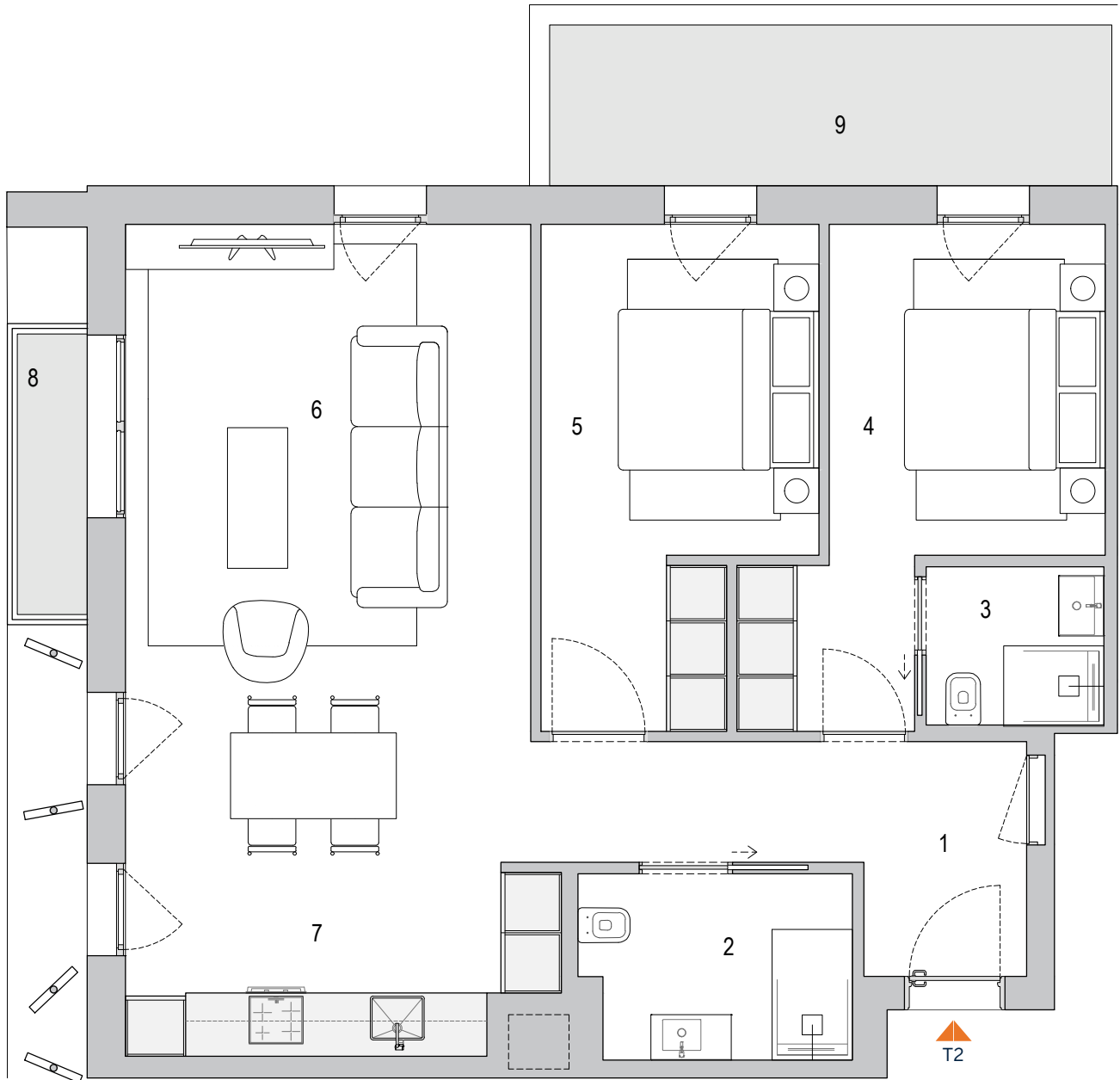


01 Hall	7.77m ²	06 Sala	26.00m ²
02 I.S.	4.98m ²	07 Cozinha	7.48m ²
03 I.S. Suite	2.88m ²	08 Varanda	2.40m ²
04 Suite	12.07m ²	09 Terraço	10.62m ²
05 Quarto	12.31m ²		

RUA DO ANTIGO MATADOURO

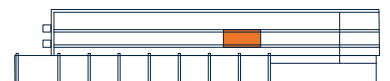
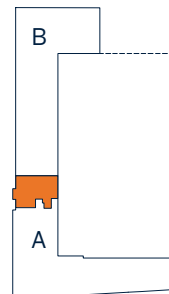
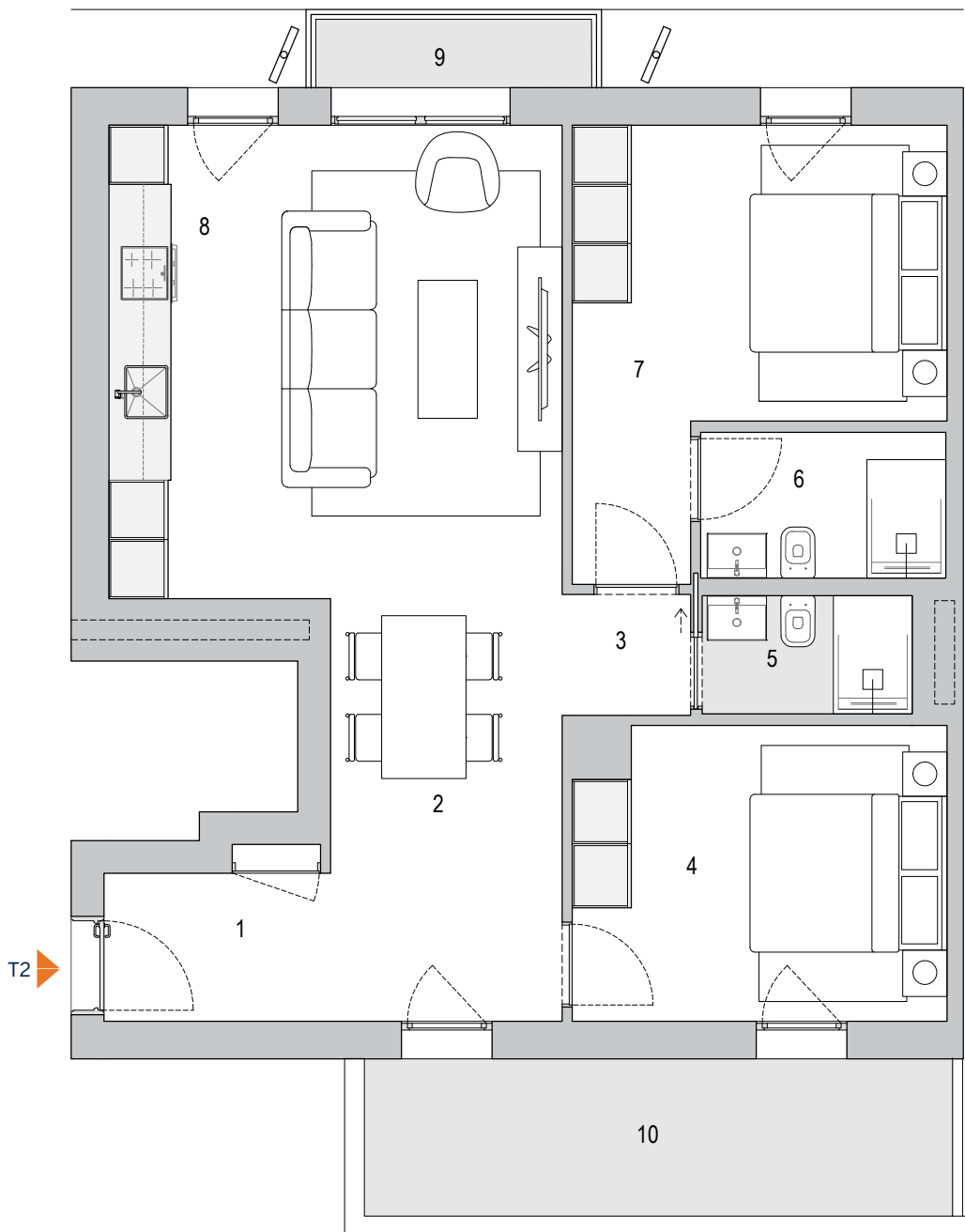


AV. DRº MANUEL DE ARRIAGA



01 Hall	3.45m ²	06 I.S. Suite	3.75m ²
02 Sala	23.51m ²	07 Suite	13.40m ²
03 Circulação	1.60m ²	08 Cozinha	8.64m ²
04 Quarto	11.07m ²	09 Varanda	2.40m ²
05 I.S.	2.65m ²	10 Terraço	11.30m ²

AV. DRº MANUEL DE ARRIAGA



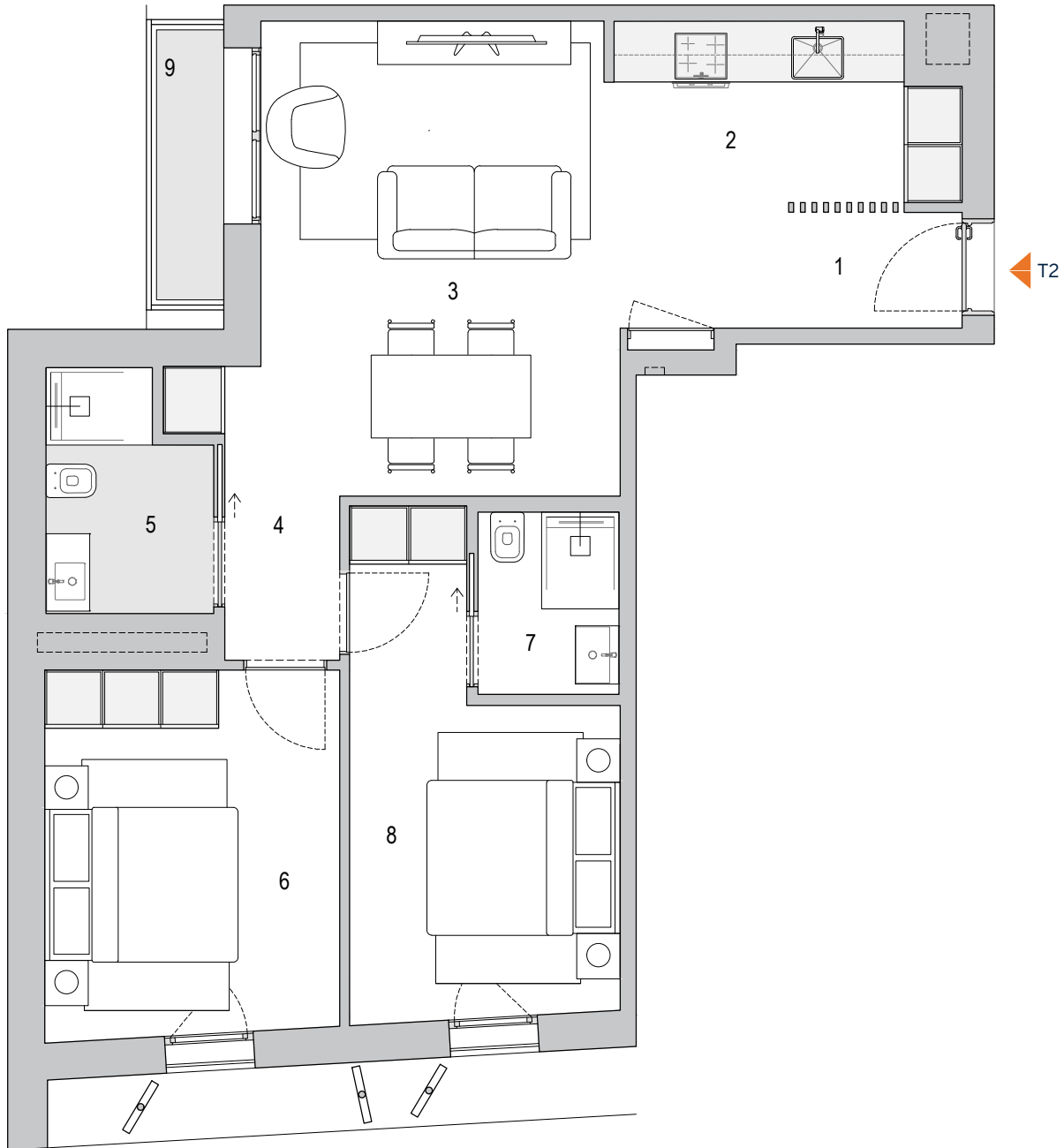
MURALHA

Setúbal Residences

3º FT2

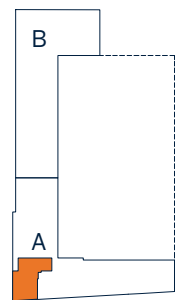
Piso 3
76,61 m² área bruta privativa
79,01 m² a.b.p. c/ varanda

01 Hall	2.26m ²	06 Quarto	11.50m ²
02 Cozinha	6.49m ²	07 I.S. Suite	2.84m ²
03 Sala	21.15m ²	08 Suite	11.55m ²
04 Circulação	2.01m ²	09 Varanda	2.40m ²
05 I.S.	4.01m ²		



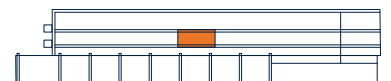
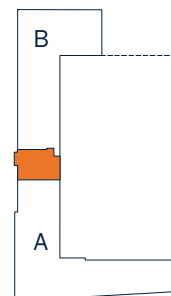
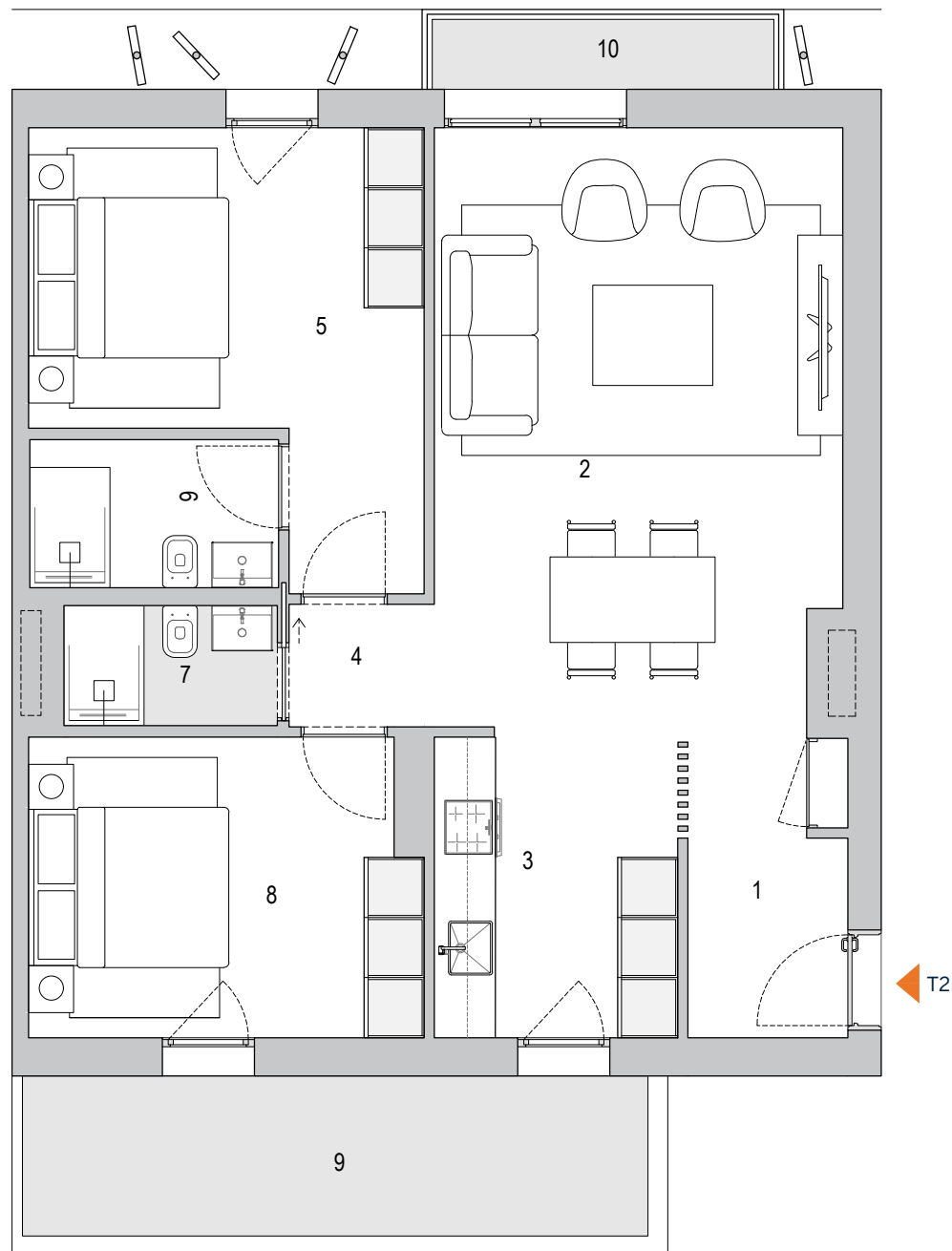
AV. DRº MANUEL DE ARRIAGA

AVENIDA 5 DE OUTUBRO



01 Hall	4.37m ²	06 I.S. Suite	3.75m ²
02 Sala	24.36m ²	07 I.S.	2.65m ²
03 Cozinha	7.29m ²	08 Quarto	11.49m ²
04 Circulação	1.78m ²	09 Terraço	11.79m ²
05 Suite	14.10m ²	10 Varanda	2.40m ²

AV. DRº MANUEL DE ARRIAGA



MURALHA

Setúbal Residences